



*Enriching the CNY community through visual and performing arts since 1892!*

---

Hello friends!

We have some very exciting events coming up in November starting with our delightfully frightful 11th annual Haunted House on October 26th; dual Gallery Openings and our Songwriters Showcase on November 2; a Regional Artist Network on November 3; Music from Neptune's Car on November 9; Theatre for Young Audiences on November 7 and 14; our final Arts Café performance with Nate Gross on November 15; the Holiday Gift Shop opening and Canal Street String Band on November 23; FREE Gingerbread House decorating for Earlville families on November 30, and so much more!

Check out the offerings by Sherburne Music Theater Society and Sherburne Chorus below!

Interested in further EOH programming?

Visit our website at [www.earlvilleoperahouse.com](http://www.earlvilleoperahouse.com) for information on all our events, how to volunteer, sign up for memberships and more!

**SPECIAL NOTICE:** EOH Members and the public are invited to attend our annual meeting on November 20 at 5:30pm. EOH members are eligible to vote on our new slate of Board Members!

---



11<sup>TH</sup>

# ANNUAL HAUNTED OPERA HOUSE

~1892~

SATURDAY OCTOBER 26

7PM - 9PM

18 EAST MAIN ST., EARLVILLE  
FREE AND OPEN TO THE PUBLIC!  
DONATIONS GREATLY APPRECIATED



SPONSORED BY BLACK CAT ANTIQUES



Council on  
the Arts



PARENTS USE DISCRETION WITH CHILDREN!

[earlvilleoperahouse.com](http://earlvilleoperahouse.com) // 315.691.3550



## Songwriters Showcase November 2 @ 7PM

Join us for an evening of original music and the stories behind the songs featuring Songwriting 1 & 2 participants and local musicians Bruce Ward, John Owen, Fred Ashforth, John E. Lyons, JoAnne Sherwood, Mike Manley, facilitator Reyna Stagnaro and others. The showcase will reflect points discussed in the workshops: Where do song ideas come from? How are they crafted? What makes a good song relatable to so many people? Enjoy a great lineup of talented songwriters surrounded by art and a wonderful sense of community in the Arts Café.

[BUY TICKETS...](#)

## Neptune's Car



## **November 9 @ 7PM**

After Holly Hanson wrote "Lighthouse Keeper" to help her boys with homeschool lessons, she decided they should live in a lighthouse. For an entire week, they were the keepers of an island lighthouse off the coast of Newport, Rhode Island. Steve Hayes is the other half of this personable Contemporary Folk duo, contributing his own well-crafted songs, as well as some damn good guitar work. They offer music in a down-to-earth style that is so good the prestigious Great American Song Contest called their "Fly Fishing the Big Hole" ". . . vivid, focused and engaging," and added, "It's a pleasure to hear songs of this caliber."

**BUY TICKETS...**

---

## **Nate Gross**

**in the Arts Cafe**



## November 15 @ 7PM

There are so many great guitar players out there today. We have the world at our fingertips and have access to every learning resource we can imagine but what is skill without soul?

Nate Gross is an old soul. At 37 years old, he has accomplished great success in the industry playing the styles that have been set aside as a new generation of pop music takes over our ears.

[BUY TICKETS...](#)

---

# Canal Street String Band



## **November 23 @ 7PM**

With three voices, fifty-five strings, and a pair of cow bones, The Canal Street String Band puts a brand-new shine on some seriously fun old American music.

Fiddle tunes....sea shanties....cowboy songs....canal ditties....mountain music....western swing...and originals too, with banjo, fiddle, twin mandolins, string bass, dobro, guitar, octave mandolin, assorted "pocket" instruments, and three-part harmonies.

**[BUY TICKETS...](#)**

---

## **The Delaney Brothers** **Bluegrass Christmas**

**\*\*SPECIAL HOLIDAY SHOW\*\***

**Get your advance tickets now!**



## **December 15 @ 2PM**

For over 35 years, brothers Ray and John Delaney have entertained audiences around the northeast and beyond with their own brand of wonderful “brother duo” harmony that was the hallmark of legendary acts such as Jim and Jesse McReynolds and the Louvin Brothers. With John’s smooth lead vocals and Ray’s high tenor harmonies, they cultivated a unique sound, which built a loyal fanbase that has continued to grow throughout the years.

**[BUY TICKETS...](#)**

---



## ATTENTION ARTISTS!

The **Earlville Opera House** is pleased to present a **Regional Artist Network** hosted by willow artist Bonnie Gale on **Sunday, November 3 from 11am -3pm** in our Arts Café.

You are cordially invited to attend this Regional Artists Network meeting where we will have an **Artist Showcase**. **All attending artists are welcome to set up a small display of their work with publicity materials**. Tables are provided by the Opera House but please bring any set up props beyond table space. **Set-up is planned for 11am with short introductions at noon, followed by a potluck lunch** (please bring something you think others will enjoy!) After lunch, each artist will have the **opportunity to present to the whole group**.

This Artist Showcase will allow all of us to get know the artistic talent in the region and make wonderful connections that support cultural and artistic exchange, nurture experimentation and new ideas, and support the development and promotion of new work.

If you are interested in displaying and presenting at the Showcase, please **RSVP to [bonwillow@frontierner.net](mailto:bonwillow@frontierner.net)** NOW. It is not too soon!! Please provide your name and artistic medium. Closer to the time, an email will be sent with further details. **For more information, please contact Bonnie Gale at 607.336.9031.**

*The Earlville Opera House is located at 18 East Main Street in the quaint Village of Earlville, NY and the EOH is handicap accessible.*

*EOH events are made possible, in part, with public funds from the New York State Council on the Arts with the support of Governor Andrew Cuomo and the New York State Legislature, and through the generosity of EOH members.*





**EARLVILLE OPERA HOUSE**  
**THEATRE FOR YOUNG AUDIENCES**

**THURSDAY, NOVEMBER 7, 10AM ~ GRADES 6-12**  
**\$10 TICKETS ~ CALL (315) 691-3550 TO REGISTER YOUR CLASS NOW!**

**THIS PRODUCTION MEETS NYS LEARNING STANDARDS FOR THE ARTS AND ENGLISH LANGUAGE ARTS**

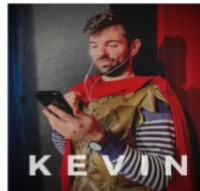
**SCHOOLS MAY BE ELIGIBLE FOR TICKET REIMBURSEMENT COSTS!**

**CALL TO INQUIRE IF YOUR SCHOOL PARTICIPATES WITH THE: BOCES AIE PROGRAM 607-335-1419**

**JESSICA DAKOSTY AIE@DCMOBOCES.COM**



**GINA**



**KEVIN**

**OPERA  
 MADE  
 GETTABLE**



**EMILY**



**LANCE**

↑ the baritone



**JOHN**



↑ the mezzo  
 ← the pianist

COMBINING THE BEST OF ALL POSSIBLE WORLDS - AWESOME SINGING, GREAT-SOUNDING ORCHESTRA, RIVETING DRAMA, STUNNING DANCE, SPECTACULAR SETS, LAVISH COSTUMES, FANCY LIGHTING, AND SPECIAL EFFECTS - OPERA DELIVERS! THROUGH HUMOROUS ANECDOTES AND POP CULTURE REFERENCES, STUDENTS LEARN THAT OPERA IS A BIG PART OF THE WORLD AROUND THEM AND DISCOVER JUST HOW RELATABLE IT CAN BE

**PRODUCTION TAKES PLACE IN THE HISTORIC 1892 THEATER!**



EARLVILLE OPERA HOUSE, 18 EAST MAIN STREET, EARLVILLE, NY 13332

[WWW.EARLVILLEOPERAHOUSE.COM](http://WWW.EARLVILLEOPERAHOUSE.COM)







Thursday,  
November 14

10am  
\$10 tickets

Call:  
(315) 691-3550  
to register your  
class now!

*This production meets NYS  
Learning Standards for the  
Arts and English Language Arts*

*PERFECT for K-5*

Schools may be  
eligible for ticket  
reimbursement  
costs!

Call to inquire if your  
school participates with  
the:

BOCES AIE Program  
607-335-1419

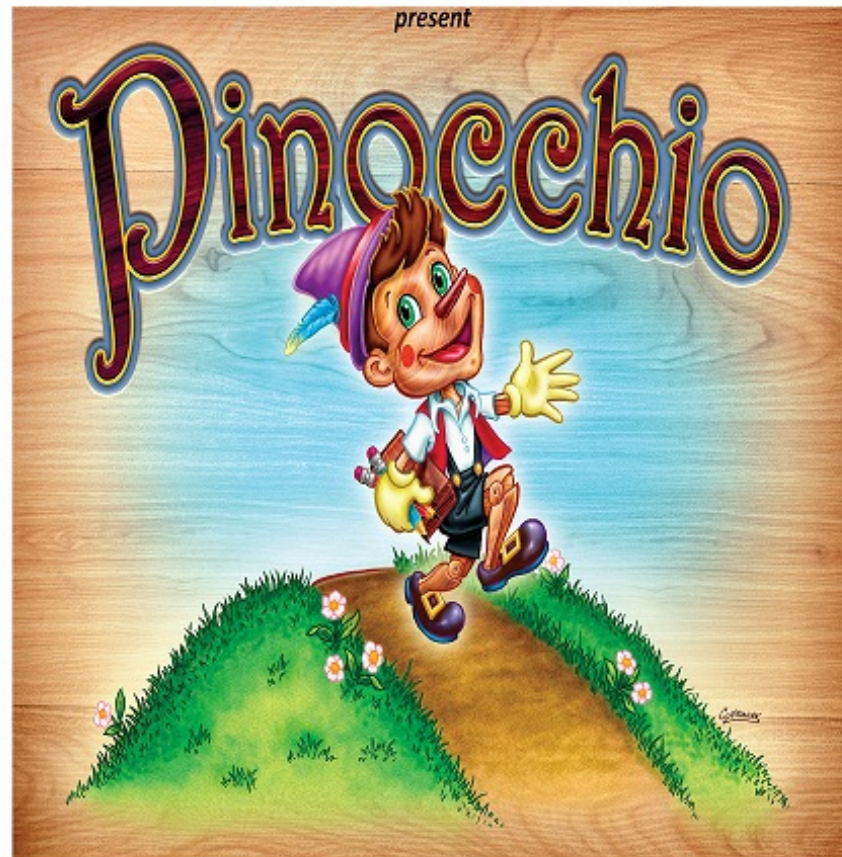
Jessica Dakosty  
aie@dcmoboces.com

# TRICITIES OPERA GO-ROUND



Earlville Opera House &  
Preferred Mutual Insurance Company

present



OPERA-GO-ROUND, Tri-Cities Opera's Touring Educational Program, is celebrating 45 years of bringing live musical performances to schools throughout New York and Pennsylvania. Annually, Opera-Go-Round performs for as many as 20,000 students. Our mission is simple: to bring great music to the newest generation of listeners!

Production takes place in the historic 1892 Earlville Opera House theater!

18 East Main Street, Earlville, NY 13332

[www.earlvilleoperahouse.com](http://www.earlvilleoperahouse.com)

(315) 691-3550





# **Sherburne Music - Theater Society December 7 @ 2 & 7:30PM**

## **A play-reading of “A Christmas Carol”**

Join the Sherburne Music-Theater Society for a festive reader’s theater production of “A Christmas Carol.” The production is being directed by Rick Thormahlen and will feature all of your favorite characters including, Tiny Tim, the Ghost of Christmas Past and - of course - Ebenezer Scrooge! As part of Earlville’s Holiday Celebration Day, both productions are free for all holiday revelers (free-will donations graciously accepted).

To learn more about the upcoming production, visit  
[facebook.com/SherburneMusicTheaterSociety/](https://www.facebook.com/SherburneMusicTheaterSociety/)



# **Sherburne**

# Community Chorus

December 20 @ 7PM

Presents

## “Repeat the Sounding Joy!”

The Sherburne Community Chorus returns to the Opera House stage for the group’s annual holiday concert. The program, “Repeat the Sounding Joy!” will feature a variety of holiday and winter-themed songs, spanning time periods and styles. The chorus is now entering its 51st year of bringing quality choral concerts to the area. Currently under the direction of Kylie Davis, the chorus is comprised of over 50 singers from across CNY, representing several towns including Oxford, Norwich, Guilford, Plymouth, South Otselic, Sherburne, Smyrna, Columbus, Earlville, Hamilton and Cazenovia.

To learn more about the Sherburne Community Chorus, visit [facebook.com/SherburneMusicTheaterSociety/](https://www.facebook.com/SherburneMusicTheaterSociety/)



## Upcoming Gallery Exhibits

November 2 - December 20

**Exhibits are always free and open to the public!**

*EOH is wheelchair accessible.*

## Henry J. Drexler

"The landscape of central New York inspires my work. Time, weather, and seasonal change affect the appearance of this landscape and create fleeting moments that catch my attention. Responding to the visual and emotional impact of these moments imbues my work with feeling and sense of place."

Pictured on the Left is Henry Drexler's  
"Country Road III"

[READ MORE...](#)



## **D. Michael Price**

D. Michael Price is a fantasy artist whose works have graced the walls of hundreds of galleries both nationally and internationally. Well-respected as a successful fine artist as well as published children's book author/illustrator, Michael's works of fantasy art in the acrylic and oil media on canvas are sought after by private collectors worldwide.



Pictured on the Right is Michael Price's "*A Fine Day for Flying*", 2018

[READ MORE...](#)

---

# **2019 Holiday Sale**



EARLVILLE OPERA HOUSE'S

22<sup>ND</sup> ANNUAL

HOLIDAY SALE

FEATURING OVER 70 CNY ARTISTS!

November 23 - December 21

### Calling all Artisans!

Join us for this seasonal tradition and be a part of the holiday spirit!

Drop off your artwork from November 1-16.

[Click here for information on how to enter.](#)

---

Sign your family up to participate in:

## EARLVILLE'S HOLIDAY CELEBRATION

# GINGERBREAD HOUSE DECORATING CONTEST!

Earlville families can sign up to decorate their own Gingerbread House on **Saturday, November 30 from 10am-3pm- for FREE-** at the Earlville Opera House. *Space limited, sign up now!*

**Kits and candy will be provided.**

All houses will be placed on display in the Opera House's storefront windows for judging by Santa.

The winner will be announced with the prize awarded at the Parade the evening of **December 7 on the Village Green.**

Call (315) 691-3550 to register!



Sponsored by the Earlville  
Events Committee  
and Walmart.

### EVENT LOCATION:

Earlville Opera House, 18 East Main St.,  
Earlville, NY (315) 691-3550

---

## Save-A-Seat and Preserve a Place in History!

Would you like to commemorate someone, honor a family member, friend, organization, or business? Reserve your custom engraved seat plaque, and pick your available seat in our 1892 historic theater! Seat plaques are \$200 each and include engraving, mounting on the seat of your choice, and a free individual annual membership (a \$35 value!).

Call 315.691.3550 to reserve your seat now, or stop in to view the landmark theater and hand-pick your spot. Opportunities are limited!

**Save-A-Seat** and support the mission of the Earlville Opera House to continue providing quality arts and cultural programming to Central New York.



**VISIT OUR WEBSITE!**



*The Earville Opera House Multi Arts Center enriches the Central New York community through the visual and performing arts while preserving our beautiful historic theater. Founded in 1972 as a not-for-profit, volunteer-based, community service organization, we promote the arts in a rural region of Central New York by offering programs of cultural, educational, and historical significance; and preserving and restoring the architectural and historic integrity of the Earville Opera House, a unique second-story theater constructed in 1892.*

**Visit the historic landmark theater, art galleries, and Artisan's Gift Shop  
Tuesday - Friday 10-5 and Saturday 12-3.**

**MEMBERS**  
MAKE IT POSSIBLE



**Become a member today!**

**Support the arts in your  
community -- volunteer today!**

**VISIT OUR WEBSITE!**

**STAY CONNECTED!**



**Council on  
the Arts**

*Earville Opera House events are made possible, in part, with public funds from the New York State Council on the Arts with the support of Governor Andrew Cuomo and the New York State Legislature, and through the generosity of EOH members.*

