



*Enriching the CNY community through visual and performing arts since 1892!*

---

Hello friends!

## Welcome to our 50th Anniversary Season!

We have some very exciting events happening to celebrate our milestone Anniversary including:

- \*"Living in Limbo: Portraits from the Border" ~ Exhibit by Bill McLaughlin, Opening June 4, 1-3pm
- \*Jenni Larchar and Tom Murphy, June 18
- \*Carolyn Wonderland, June 25
- \*Summer Camps
- \*Our 50th Anniversary Retrospective Gallery Exhibit
- \*Featured Artists Section
- \*Golden Anniversary Summer Jamboree

and so much more!

**NOTICE: PROOF OF VACCINATION REQUIRED AT THE DOOR.  
MASKS MUST BE WORN INSIDE.**

For information on how to use the most efficient tool to show your vaccination status at the door, please visit: <https://epass.ny.gov/home> for information on the Excelsior Pass. This is a place to keep a secure, digital proof of your COVID-19 vaccination.

**THIS IS AN EFFORT TO PROVIDE THE SAFEST AND MOST COMFORTABLE ENVIRONMENT FOR OUR PATRONS, STAFF, VOLUNTEERS AND ARTISTS, THANK YOU.**

Interested in further EOH programming?

Visit our website at [www.earlvilleoperahouse.com](http://www.earlvilleoperahouse.com) for information on all our events, how to volunteer, sign up for memberships and more!

---



## **Jenni Larchar & Tom Murphy** **June 18@ 7PM**

For over a decade, Jenni and Tom have been blending Jenni's golden voice and Tom's rhythmic piano into an eclectic repertoire of American Standards, Vintage Country, and Irish melodies, accented by Jenni's fiddle. Tugged between Jenni's love of melodic Standards and Tom's love of Country and Irish music, they haven't limited themselves to one genre.

Jenni and Tom appeal to diverse audiences, and have been featured performers at Sherburne Music in the Park, the Chenango County Fair, the Sherburne Art Show, the Local Music Project, the Palace Theater, and at markets, fairs, events and senior centers in Central New York, Maine and Massachusetts.

**FREE EVENT!**

---



## **Carolyn Wonderland** **June 25@ 7PM**

A musical force equipped with the soulful vocals of Janis and the slinging guitar skills of Stevie Ray, Carolyn Wonderland reaches into the depths of the Texas blues tradition with the wit of a poet. She hits the stage with an unmatched presence, a true legend in her time.

She grew up the child of a singer in a band and began playing her mother's vintage Martin guitar when other girls were dressing dolls. She went from being the teenage toast of her hometown Houston to sleeping in her van in Austin amid heaps of critical acclaim for excellent recordings.

**[BUY TICKETS HERE!](#)**

---

### **Thank you to our Performance Season Sponsors:**

**Community Foundation for South Central New York ; Live Music Society; NBT Bank; Preferred Mutual Insurance Company; sfcu; and Bruce Ward, Architect.**

**Special thanks to our hospitality sponsor Fred's Inn of Norwich.**

---

# EARLVILLE OPERA HOUSE



## **GOLDEN** SUMMER JAMBOREE 50TH ANNIVERSARY

**JULY 2, 2022 1 PM TO 11 PM**  
PERFORMANCES ON THE MAIN STAGE + COURTYARD



**ED VOLLMER - COLIN ABERDEEN DUO - NATE GROSS BAND  
LIPSTICK & WHISKEY FEATURING THE LAUGHING BUDDHA EPISODES**

## **THE OLD MAIN**

	<b>FOOD TRUCK: HUB CAP MUNCHIES</b> + BEER, WINE & CIDER!	 Council on the Arts	<b>\$30 PER TICKET</b> OR 2 FOR \$50	
---	--	--	---	---

**18 EAST MAIN STREET EARLVILLE, NY 13332**  
**WWW.EARLVILLEOPERAHOUSE.COM OR 315-691-3550 FOR TICKETS**  
**CHECK WEBSITE FOR UPDATED COVID PROTOCOLS**

**Click the image above to buy tickets for this 50th Anniversary Special FUNdraiser!**

***NOTE: If you are purchasing 2 tickets for \$50 you will need to quick pick 2 tickets and then choose the option for each ticket to be \$25.***

***We're looking for volunteers for this event! If you are interested then please let us know! Sign up here: [Summer Jamboree Volunteer Sign Up](#)***

---

### **ARTS VENDORS WANTED!**

EOH is looking to fill seven slots for

artist vendors at our July 2 "Golden Anniversary Summer Jamboree".

There is NO FEE, just come and set up a 6' table (tables available if needed) of artwork you'd like to sell between 1-5pm and add to the festivities of the day!

To register call the office at (315-691-3550) by June 17.

**FIRST COME, FIRST SERVE!**



**Summer Youth Musical Theatre Camps!!!**

**MINI MUSICAL THEATRE CAMP:**  
8/22 - 8/26  
8:30 - 12:00pm daily  
AGES 5-8  
(LOCATED AT THE EARLVILLE OPERA HOUSE)

**MUSICAL THEATRE CAMP:**  
8/29 - 9/2  
8:30 - 1:00pm daily  
AGES 8-13  
(LOCATED AT TSDC WITH PERFORMANCE AT THE EARLVILLE OPERA HOUSE)

**THE SPOT DANCE CENTER**

**Jenni's Music**

**Earlville Opera House 50**

**Summer Youth Musical Theatre Camps!!**

The Spot Dance Center,  
Jenni's Music &  
The Earlville Opera House  
are proud to be teaming up for  
this summer's musical theatre  
camps - now open to ages 5-13!

VISIT:  
[WWW.SPOTDANCECENTER.COM](http://WWW.SPOTDANCECENTER.COM)  
FOR DETAILS AND TO REGISTER!

**Sign up by clicking the image above!**

**\$200 for Mini Musical Theatre Camp  
\$225 for Musical Theatre Camp**



**Special thanks to Golden Artist Colors for their support of our Visual Arts Program.**

# 2022 Upcoming Gallery Exhibit Opening June 4, 1-3PM

## **"Living in Limbo: Portraits from the Border"**

Presented by **Bill McLaughlin**

### **Bio**

Bill McLaughlin is a contemporary American Tonalist landscape painter. Largely self-taught, Bill works in oils, pastels and watercolors on a variety of surfaces. His landscapes are explorations of Nature's most subtle moods. Bill lives and paints on his organic homestead in New Berlin, NY, where he tends his heirloom apple orchard and weedy gardens.

### **Artist Statement**

My work as a visual artist has mostly expressed itself in my relationship to Nature and the land on which I live. Witnessing the land in all its seasons and its many moods supplies much of the inspiration for my paintings and photographs.

It's important for my landscapes to express not only my emotional connection to the land but to hopefully instill in others the peace and serenity that I experience in Nature—and now more than ever—the urgent necessity for active stewardship of our land and water.



*Pictured above: "Esmerelda, Pamela & Edwin, Michoacan, Mexico; 2019"*

To help advocate for human rights, immigration reform, social justice with a special focus on issues related to the US/Mexican border, contact **BORDER ANGELS** at **[www.borderangels.com](http://www.borderangels.com)**

---

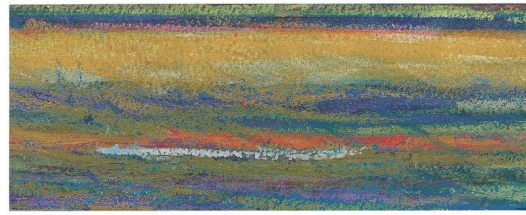
# 2022 Gallery Exhibit March 19 - October 22

## **50th Anniversary Retrospective**

Earlville Opera House (EOH) is celebrating 50 years as an incorporated nonprofit arts center in 2022 and we are celebrating the many talents of previous exhibitors!

EOH is home to three gallery spaces, the East Gallery, West Gallery and the Arts Café which annually present between 12-15 solo exhibitions of regional and national contemporary visual artists representing all

media, and we host the beloved yearly Quilt Show. This year, we're hosting one special collective exhibit combining and celebrating the past beautiful creations that have highlighted our walls.



*Pictured above: Three Landscape Studies by Francis Timothy "Tim" Walsh, Ph.D., M.F.A.*

---

# Artist Spotlight

## 50th Anniversary Retrospective Exhibit Artist Spotlights!

Our "50th Anniversary Retrospective Gallery Exhibit, 1972 ~ 2022" opened Saturday, March 19 with a very meaningful reception and runs through October 22 (gallery exhibits are always free and open to the public!).

This special collective exhibit celebrates the many talents of past showing visual artists who have highlighted their beautiful creations in the EOH galleries. Over the course of the exhibit, we are going to feature each participating artist!



## Henry Drexler

### **Bio**

Born and raised in Chenango County, I have been painting since I was nine years old. My early work was representational, but over time has become more painterly and abstract.

### **Artist Statement**

Acrylic paint is my chosen medium because it's very versatile and dries fast. Most of my work is an expression of my relationship with the rural landscape of upstate New York. It is

inspired by the experience of growing up on a dairy farm and my interest in gardening and local history. It has been featured in numerous solo and group exhibitions and can be found in museums, corporate and private collections throughout the United States.

[READ MORE](#)

# Collin Blackmore

## **Bio**

Born and raised in Chenango County, I have been painting since I was nine years old. My early work was representational, but over time has become more painterly and abstract.

## **Artist Statement**

Acrylic paint is my chosen medium because it's very versatile and dries fast. Most of my work is an expression of my relationship with the rural landscape of upstate New York. It is inspired by the experience of growing up on a dairy farm and my interest in gardening and local history. It has been featured in numerous solo and group exhibitions and can be found in museums, corporate and private collections throughout the United States.



## [READ MORE](#)



# Storm

## **Bio**

When I started art school, my father asked, "What for?" and I said, "For Me!"

## **Artist Statement**

The beauty of life!

## **Favorite Memory**

My favorite memory is bringing my students on walks to the EOH when I taught at Earlville Elementary School. Several of my students asked why can't we have a show here? I talked to Lisa and the student art show began.

I exhibited in 1997 or 98 after my Residency in the Bohasco Foundation, Italy and in 2021.

## [READ MORE](#)

**GOLDEN**  
ARTIST COLORS®

---





# CALL FOR GALLERY SUBMISSIONS

**AT THE EARLVILLE GALLERIES**

**FOR OUR 2023-2024 CYCLE**

**DEADLINE: November 1, 2022**

---

## **Upcoming SCR and Restart NY Regrant Projects!**

For a list of all Statewide Community Regrant projects visit us at:  
<http://www.earlvilleoperahouse.com/2022-awards>

\$116,500 awarded in 2022!

Watch for the 2023 SCR Application Announcement Coming Soon!

### **Broome County**

#### **\*\*Christina Muscatello**

**Art Talks**

Every Wednesday

Binghamton, NY

[www.memorymaker.me](http://www.memorymaker.me)

#### **\*\*The Binghamton Poetry Project, with the Binghamton Center for Writers**

**The Binghamton Poetry Project (BPP)**

Through November 30

Binghamton, NY

[www.thebinghamtonpoetryproject.wordpress.com.org](http://www.thebinghamtonpoetryproject.wordpress.com.org)

#### **\*\*Dept of Public Art/ Center for Gender, Art & Culture**

**Mural Painting at Bridge Pedal Event**

Through August

Binghamton, NY  
[www.deptofpublicart.com](http://www.deptofpublicart.com)

## **\*\*Vestal Museum**

### **Second Saturday 2022**

June 11

Vestal Museum, Vestal, NY

[www.thevestalmuseum.org](http://www.thevestalmuseum.org)

*\*\*Denotes additional funding provided by the Stewart W. & Willma C. Hoyt Foundation, Binghamton*

## **Otsego County**

### **Cherry Valley Artworks, Inc.**

#### **2022 Summer Concert Series**

June 4, June 25

Cherry Valley Artworks, Cherry Valley, NY

[www.cvartworks.org](http://www.cvartworks.org)

### **Butternut Valley Alliance**

#### **On the Trail of Art**

June 11-12, 2022

Basswood Pond State Forest, Burlington Flat, NY

[www.butternutvalleyalliance.org](http://www.butternutvalleyalliance.org)

### **Orpheus Theatre**

#### **Orpheus Theatre Takes Children's Theater "Into the Woods"**

June 27-July 17

Orpheus Theater, Oneonta, NY

[www.orpheustheatre.org](http://www.orpheustheatre.org)

### **The Arc Otsego**

#### **Voice 18 - 2022**

July 21, 2022

[www.arcotsego.org](http://www.arcotsego.org)

### **Otsego Dance Society**

#### **Otsego Dance Society's Summer Community Dance Series**

July 1

Cornfield Hall Cooperstown, NY

[www.otsegodancesociety.weebly.com](http://www.otsegodancesociety.weebly.com)

### **Unadilla Historical Association**

#### **Summer Concert Series**

Thursday nights in July

Unadilla, NY

### **First Night Oneonta, Inc.**

#### **Hometown Fourth of July**

July 2, 3, 4, 2022

Oneonta, NY

[www.firstnightoneonta.com](http://www.firstnightoneonta.com)

### **Pathfinder Village Foundation**

#### **Pathfinder Village Summer Concert Series 2022**

Saturdays in July

[www.pathfindervillage.org](http://www.pathfindervillage.org)

### **Village of Laurens**

#### **2022 Laurens Summer Concerts in the Park Series**

July 6, 13, 20 and 27, 2022

## **\*Aunt Karen's Farm/ The Visionary**

### **The Force at First (at the Visionary)**

Performances June 16-19

AFK Foundation Cooperstown

[www.auntkarensfarm.org](http://www.auntkarensfarm.org)

## **\*Cherry Valley Artworks**

### **The "Big Takeover" in Concert: A Celebration of a New Beginning**

Performances June 16-19

AFK Foundation Cooperstown

[www.cvartworks.org](http://www.cvartworks.org)

## **Chenango County**

### **Bonnie Gale, Willow Artist**

#### **Willow Arts for the Oxford Academy**

April 4 - December 16, 2022

Oxford Academy, Oxford, NY

[www.bonniegale.com](http://www.bonniegale.com)

### **Gilbert Polk**

#### **Fun Community Improv for Everyone**

May 1 - September 5, 2022

Guernsey Library Norwich

[www.guernseymemorallibrary.org](http://www.guernseymemorallibrary.org)

### **6 on the Square**

#### **2022 Performances**

June 4, 18

6 on the Square, Oxford, NY

[www.6onthesquare.org](http://www.6onthesquare.org)

### **Sherburne Public Library**

#### **2022 Summer Reading Program Presentations**

July 22

Sherburne Public Library, Sherburne, NY

[www.sherburnelibraryny.org](http://www.sherburnelibraryny.org)

### **Suzanne Bloom - Artist**

#### **I AM THE BOOK**

Summer 2022

### **South New Berlin Free Library**

#### **Weaving Together a Community Celebration**

Through September 17

South New Berlin Free Library, South New Berlin, NY

[www.libraries.4cls.org/southnewberlin/wp/](http://www.libraries.4cls.org/southnewberlin/wp/)

### **Guernsey Memorial Library**

#### **Kathy Ceceri's Crafts for Learning**

July - August

Guernsey Memorial Library, Norwich, NY

[www.guernseymemorallibrary.org](http://www.guernseymemorallibrary.org)

### **Improve Norwich Now**

#### **Merchants, Minstrels, Peddlers and Pirates along the Chenango Canal**

July 5 - October 9

Norwich, NY

<https://improvenorwichnow.org/>

### **The Sam and Adele Golden Foundation for the Arts**

**2022 Made in Paint Exhibition: 2020-2021 Artists in Residence**

Through September

Sam and Adele Golden Foundation for the Arts, New Berlin

[www.goldenfoundation.org](http://www.goldenfoundation.org)

## **Chenango County Blues Society**

### **Free Thursdays Summer Concert Series and the 29th Chenango Blues Fest**

Every Thursday in July and August for East Side Park concerts and August 19th and 20th 2022

Norwich, NY

[www.chenangobluesfest.org](http://www.chenangobluesfest.org)

## **The Place**

### **Music Together at The Place**

Ongoing

The Place, Norwich, NY

[www.theplacenorwich.com](http://www.theplacenorwich.com)

*\*Denotes Restart NY Regrant Awards. The Restart NY Regrant Program is made possible with public funds from the New York State Council on the Arts with the support of the Office of the Governor and the New York State Legislature, and administered by The Earlville Opera House.*

---

## **Earlville Opera House Seeking Commercial Tenants!**



*#8 Under Renovations (pictured above and to the right)*

*#12 Available Immediately (pictured below)*

Earlville Opera House (EOH) recently acquired an adjacent building storefront which includes approximately 1400 square feet of space located at #8 East Main Street (currently under renovations). In addition, EOH owns #12 East Main Street, a 1000 square foot storefront. We are now accepting proposals to lease these spaces.

In order to benefit both the tenants and the Opera House, we are specifically looking for a business that relates to Opera House programming and/or can provide a meaningful service to the greater Earlville community. For example, a store selling musical related items,



a shop that has occasional live music or has a musical or artistic theme, however all business proposals will be thoughtfully considered.

Rent for #8 is \$850/mo. + utilities  
Rent for #12 is \$650/mo. + utilities

Please submit the following information by email to: [info@earlvilleoperahouse.com](mailto:info@earlvilleoperahouse.com) or mail to: EOH, PO 111, Earlville, NY 13332.

Serious inquires only.

Please include in your proposal:

- 1) The general concept for the business:
- 2) Your experience with this type of business:
- 3) Your experience with operating a business in general:
- 4) Do you have the resources for customizing the space for proposed operation:
- 5) Include any other information that would be helpful such as market research or a business plan.



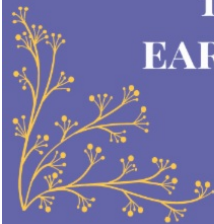
# EARLVILLE OPERA HOUSE GIFT SHOP

## MARCH 19 - OCTOBER 22

TUESDAYS - FRIDAYS 10AM - 4PM // SATURDAY 12 - 3PM

.....

18 EAST MAIN ST., EARLVILLE, NY 13332  
[EARLVILLEOPERAHOUSE.COM](http://EARLVILLEOPERAHOUSE.COM) // 315.691.3550



**Are you getting your inventory ready  
for the Holiday Sale which starts on November 25?**

**Come on in and check out our new 50th Anniversary Season**

---

## **Wishlist**

We are always in need of office supplies and other things! If you can help, here are some other things we wish for:

- Plants and Flowers
- Dolly for moving items
- New Vacuum Cleaner



---

## **Become a Sustaining Partner**



Your beloved Earlville Opera House faced tough new challenges during the pandemic shutdown. With no shows, no workshops or classes, galleries and gift shop closed and the theater dark we lost major portions of our revenue. We are still recovering from this and you can help by becoming a Sustaining Partner!

**[Click here for more information!](#)**

---

## **Save-A-Seat** **Preserve a Place in History!**

Would you like to commemorate someone, honor a family member, friend, organization, or business? Reserve your custom engraved seat plaque, and pick your available seat in our 1892 historic theater! Seat plaques are \$200 each and include engraving, mounting on the seat of your choice, and a free individual annual membership (a \$50 value!).

Call 315.691.3550 or **[click here](#)** to reserve your seat in the landmark theater.  
**Opportunities are limited!**

**Save-A-Seat** to support the mission of the Earlville Opera House!



**SAVE-A-SEAT TODAY!**



*The Earlville Opera House Multi Arts Center enriches the Central New York community through the visual and performing arts while preserving our beautiful historic theater. Founded in 1972 as a not-for-profit, volunteer-based, community service organization, we promote the arts in a rural region of Central New York by offering programs of cultural, educational, and historical significance; and preserving and restoring the architectural and historic integrity of the Earlville Opera House, a unique second-story theater constructed in 1892.*

**MEMBERS**  
MAKE IT POSSIBLE



**Become a member today!**

**Support the arts in your community -- volunteer today!**

**VISIT OUR WEBSITE!**

**STAY CONNECTED!**



**Council on the Arts**

*Earlville Opera House events are made possible, in part, with public funds from the New York State Council on the Arts with the support of the Office of the Governor of the State of New York and the New York State Legislature, and through the generosity of EOH members.*